

***Lepanthes glicensteinii* Luer, sp. nov.**

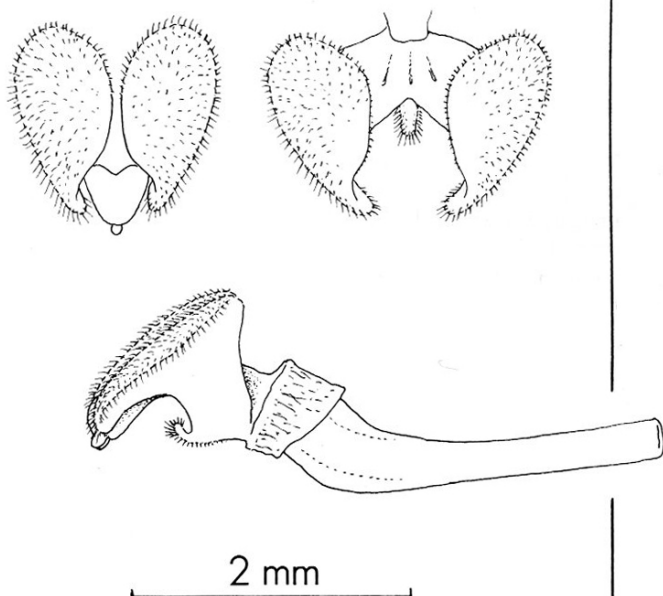
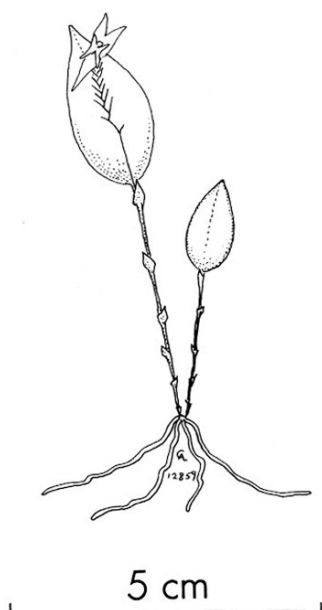
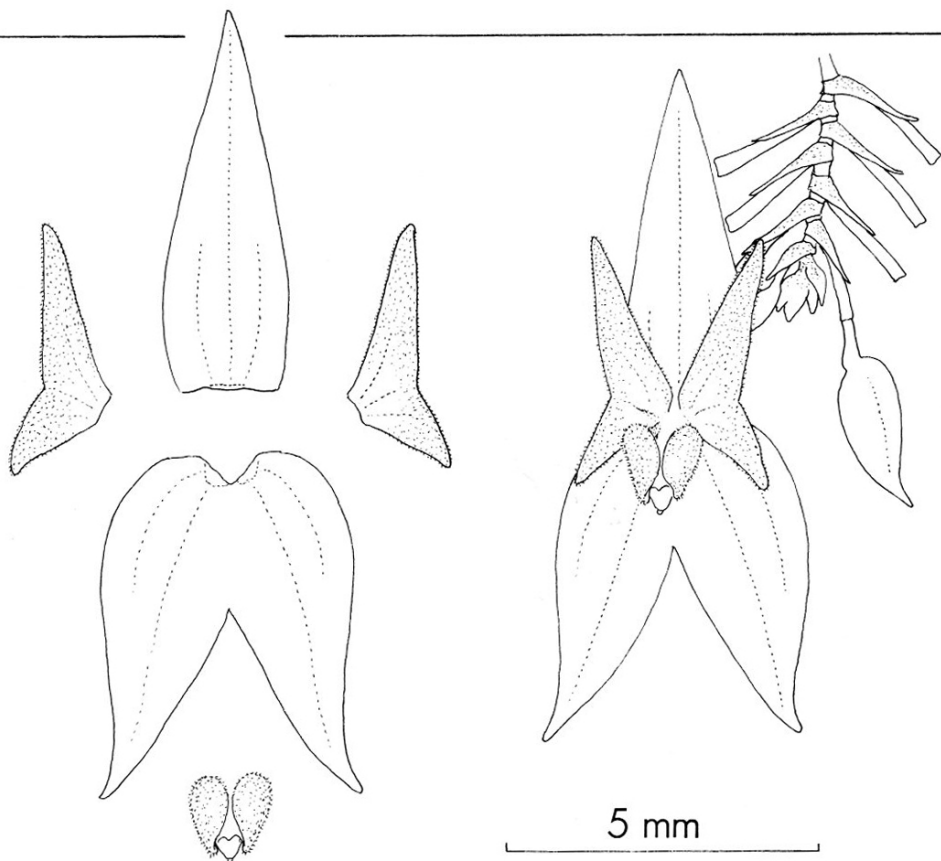
Planta parva caespitosa, inflorescentia racemosa congesta disticha longipedicellata folio elliptico breviori, sepalis anguste ovatis acutis, petalis transverse bilobatis, lobis triangularibus divergentibus, lobo inferiore minore, labelli laminis ovatis pubescentibus, appendice oblonga longiciliata.

Plant small, epiphytic, caespitose; roots slender. Ramicauls erect, slender, 2-4 cm long, enclosed by 5 or 6 minutely ciliate, lepanthiform sheaths. Leaf erect, coriaceous, elliptical-ovate, acute, 25 mm long, 12 mm wide, the base cuneate into a petiole 1.5 mm long. Inflorescence a congested, distichous, long-pedicellate, successively many-flowered raceme up to 10 mm long, borne on the back side of the leaf by a filiform peduncle up to 10 mm long; floral bracts 1.5 mm long; pedicels 2 mm long; ovary 2 mm long; sepals greenish white, carinate, entire, narrowly ovate, acute, the dorsal sepal 6 mm long, 2 mm wide, connate to the lateral sepals for 0.5 mm, the lateral sepals oblique, 5.5 mm long, 2 mm wide, connate 1.75 mm; petals greenish white, orange on the margins of the upper lobe, minutely pubescent, transversely bilobed, 1 mm long, 4 mm wide, 3-veined, the lobes obliquely triangular, narrowly obtuse, diverging; lip greenish white, rose at the base, bilaminate, the blades ovate, pubescent, 1.25 mm long, the apices narrowed, the connectives broadly oblong, forming a broad body, connate to the base of column, the sinus obtuse with the appendix small, oblong, long-pubescent; column 1 mm long, the anther dorsal, the stigma ventral.

ETYMOLOGY: Named in honor of Dr. Leon Glicenstein who discovered this species.

TYPE: *COSTA RICA*: without locality, collected by L. Glicenstein, flowered in cultivation by P. Jesup & A. Jesup in Bristol, CT., 26 April 1987, *C. Luer* 12859 (Holotype: MO).

During the years that he lived in Costa Rica, Dr. Leon Glicenstein made numerous valuable collections of orchids, many of them rare, some of them for the first time. His collections were extremely conservative. Usually he removed only one or a part of one plant for cultivation. He never revealed his localities for fear of their being overcollected,



Lepanthes glicensteinii Luer